



FLOORING BAMBOO

Strandwoven / Solid Bamboo



- Durable & Stable
- Easy to Install
- Easy to Clean
- 100% Bamboo Material
- Sound Reduction
- Fire Prevention

Click System Available

A. T&G Click



B. Drop Lock (Short Side)+Unilin(Long Side)



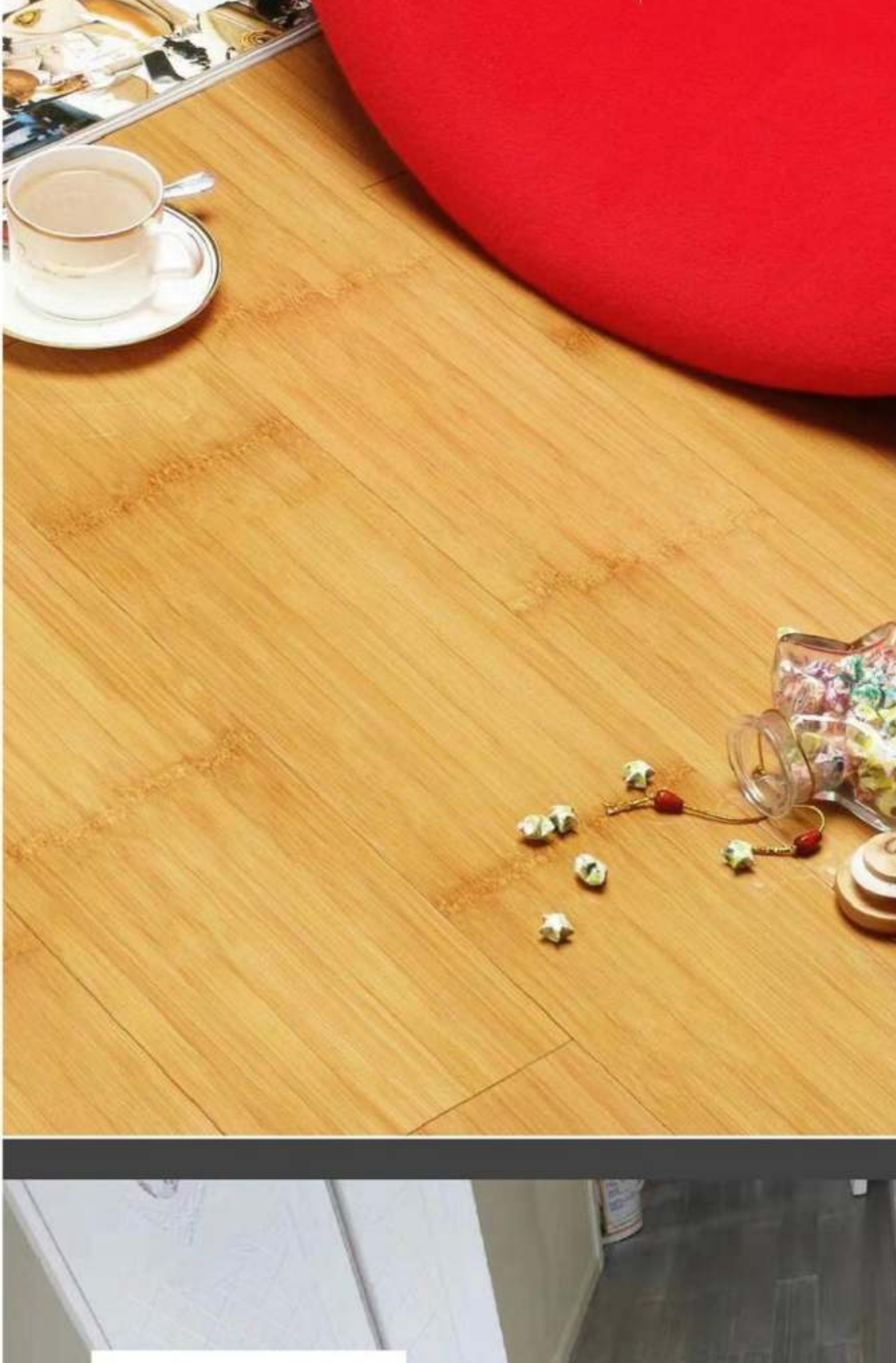
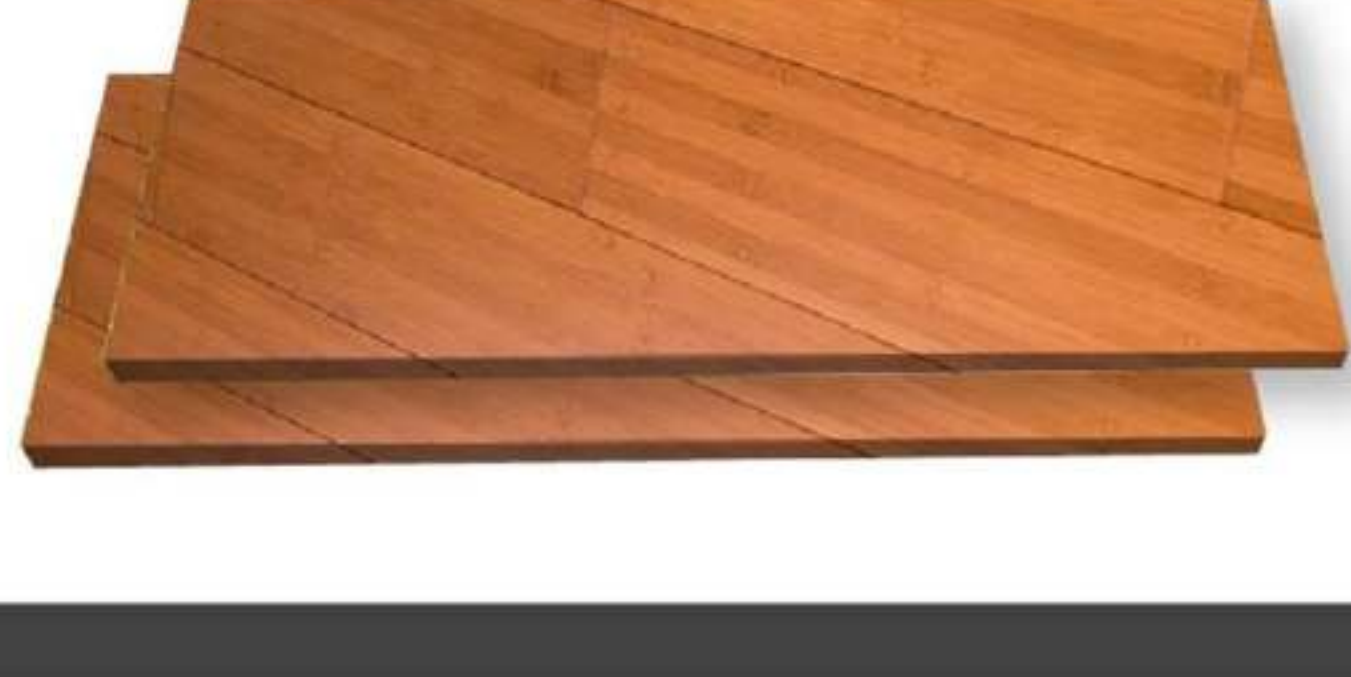
Solid Bamboo flooring is made of natural high-quality bamboo as raw material, and is made of high temperature and high pressure after special harmless treatment. It has a super anti-moth function. With the natural texture of bamboo, it has both the natural beauty of log floors and the strong and durable advantages of ceramic floor tiles.

Bamboo Flooring Types

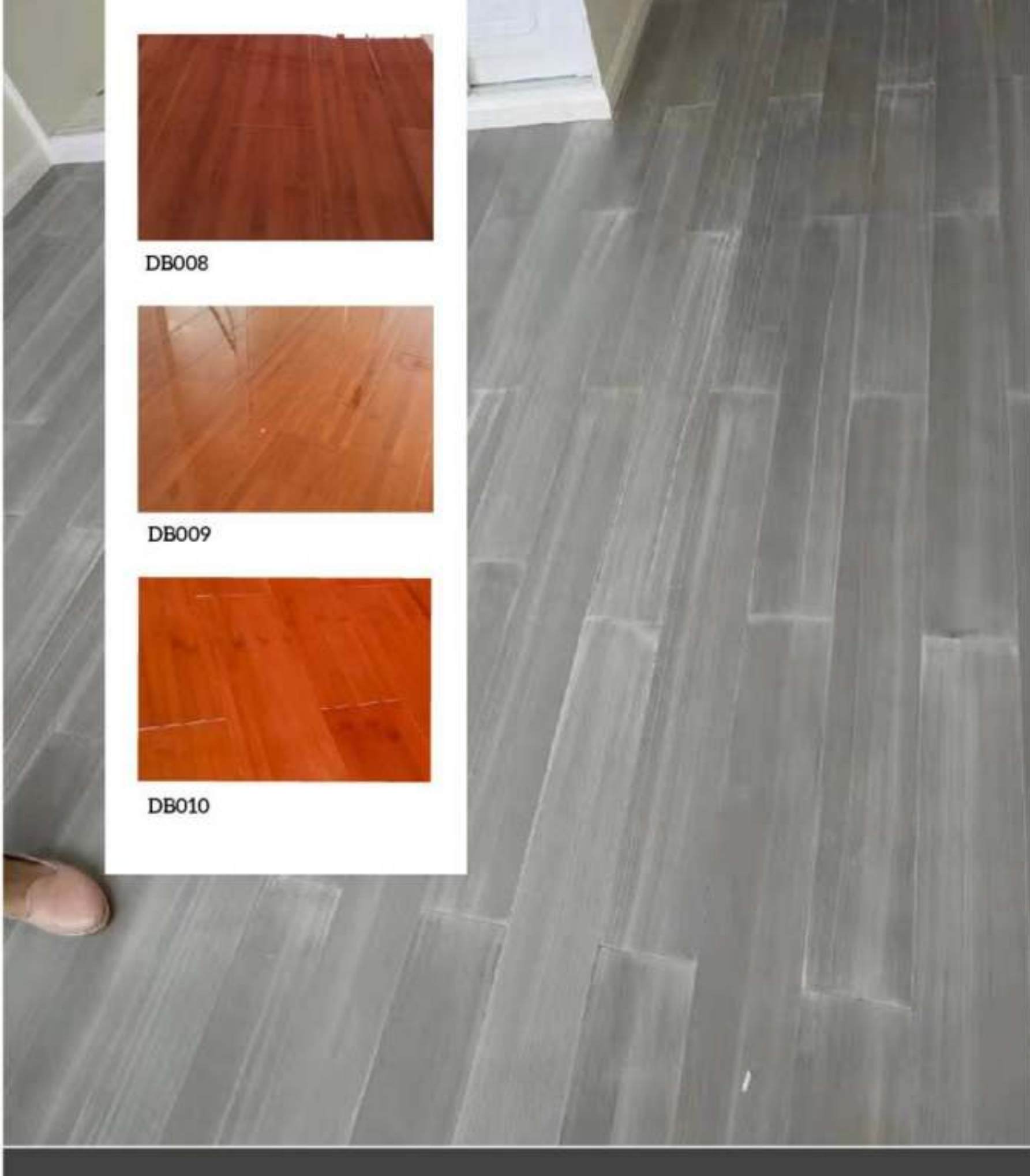
- Horizontal:**
 Strips of bamboo are arrayed on their side, also referred to as flat grain. Creates a pattern of small marks from the "nodes" of the bamboo culm.
- Vertical:**
 Strips of bamboo are arrayed vertically, also referred as edge grain. Minimizes the appearance of the "nodes" from the culm.
- Strand Woven:**
 Irregular strips of bamboo are woven together for added strength and then compressed under extreme heat and pressure, creating a unique and beautiful marbled grain. Strand Woven bamboo flooring is also 2-3X harder than traditional hardwoods and classic bamboo flooring(horizontal & vertical).

SPECIFICATIONS

Materials	100% Bamboo
Solid Bamboo Size	1030*130*12/15/17mm, etc.
Strandwoven Size	920*132*14mm, 1850*130*14mm, etc.
Color	Natural, Cherry, Grey, Teak, Coffee, etc.
Moisture content	8%-12%
Formaldehyde emission	Up to E1 standard of Europe
Fireproof Grade	Dfl
Solid Bamboo Density	about 650g/cm ³
Strandwoven Density	about 1100g/cm ³
Glue	Dynea
Application	Residential & Commercial
Life Span	About 15-20 years
Certificate	CE, Test Report
Packing	Plastic films with carton box



Horizontal Solid Bamboo



Vertical Solid Bamboo



Strandwoven Bamboo



BAMBOO FLOOR ACCESSORIES

- Wall Base:**
 A decorative molding that is nailed to the walls on top of the flooring, or it can be used with quarter round.
- Threshold:**
 Used in doorways, at sliding doors, against fireplaces, etc, when abutting joining rooms that have floors of different heights.
- T-molding**
 Used as a transition piece between two floors that are of the same height.

- Quarter Round:**
 Used along the base of the walls against the wood baseboard to cover the required expansion gap between the flooring and the wall.
- Reducer:**
 Used to smoothly taper the edge of the wood floor down onto another surface.
- Stair Nosing:**
 Used on front edge of a step.
- Stair Tread:**
 Used on front edge of a step.



Hayat Bamboo for Cladding and Flooring
 TEL : +962-79-9746514
 EMAIL: info@hayatbamboo.com
 WEBSITE: www.hayatbamboo.com